

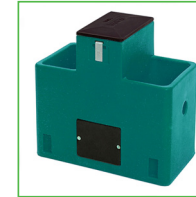
Insulated drinking trough

Features

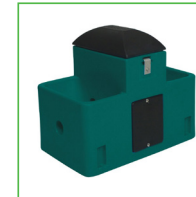
Material	047-3765 Polyethylene	047-3774 Polyethylene
Type	1 bowl	2 bowls
Insulation	Urethane foam	Urethane foam
Dimensions	27 ½ H x 16 P x 20 L in 70 H x 40 P x 51 L cm	27 ½ H x 16 ½ P x 30 ½ L in 70 H x 42 P x 77 L cm
Drinking height	19 in (48 cm)	19 in (48 cm)
Capacity	15 L (3,9 gal)	23 L (6 gal)
Recommended for	30 beefs or horses	60 beefs or horses
Warranty	5 years	5 years
Material	047-3792 Polyethylene	064-4558 Polyethylene
Type	2 bowls	1 bowl
Insulation	Urethane foam	Urethane foam
Dimensions	24 ½ H x 17 ½ P x 28 ¾ L in 62 H x 44,5 P x 73 L cm	30 H x 24 P x 48 L in 76 H x 61 P x 122 L cm
Drinking height	14 po (36 cm)	24 po (61 cm)
Capacity	23 L (6 gal)	95 L (25 gal)
Recommended for	100 sheeps or goats	75 dairy cows or 150 beefs
Warranty	5 years	5 years

Advantages

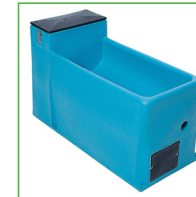
- One-piece body
- No sharp edges
- Tough, high-impact resistant material
- Durability to stand up to livestock abuse
- Resistance to corrosion
- Extra insulation above the valve area
- Removable dome for quick and easy access to valve area
- 2 to 3 in (5 to 8 cm) urethane insulation
- Sealed and sloped bottom for easier cleaning



047-3774



047-3792



064-4558



047-3765



Parts



Heating element
046-4022



Insulated heat tube
047-3835