

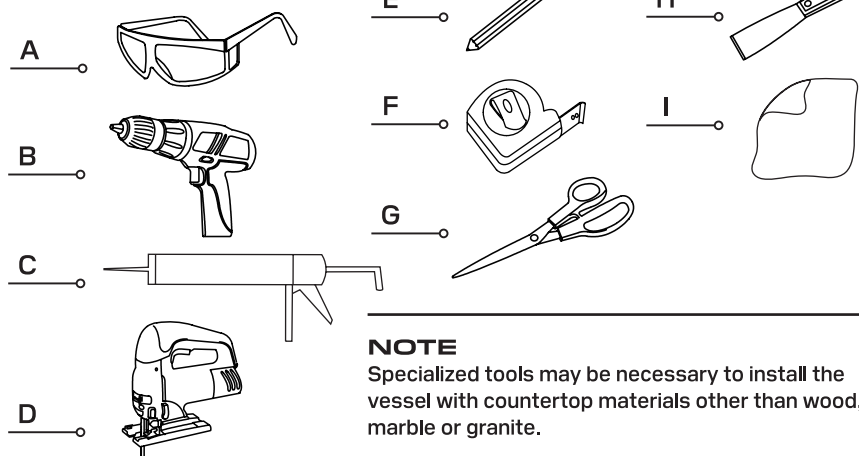
INSTRUCTION MANUAL ROUND VESSEL

Dear Customer,

Thank you for purchasing this product. To ensure best possible performance, please READ, FOLLOW, AND KEEP THESE INSTRUCTIONS.

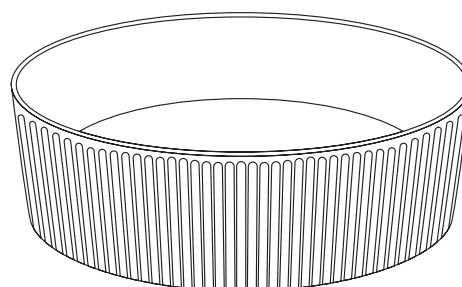
RECOMMENDED TOOLS (NOT INCLUDED)	
NO	NAME
A	Safety goggles
B	Drill
C	Silicone sealant
D	Jigsaw
E	Pencil
F	Tape measure
G	Scissors
H	Putty knife
I	Humid fabric

INCLUDED IN THE BOX	
NO	NAME
A	Vessel



NOTE

Specialized tools may be necessary to install the vessel with countertop materials other than wood, marble or granite.



WARNING

1. Reduce risk of scratches

Clean vessel with non-aggressive products and soft cloths or sponge.

2. Reduce risk of staining

Prevent stains by quickly removing anything that could mark your vessel, and rinsing thoroughly.

3. Clean regularly

The vessel should be cleaned regularly for limescale and soap stains, cosmetic residues, rust and mould that may become visible and difficult to remove.

4. Clean with a mild detergent

A soft close or sponge and mild detergent will remove the majority of dirt and even certain stains. Rinse with clean water to remove all traces of the detergent.

5. Use lemon juice or vinegar for water stains

Lemon juice or vinegar can be used to remove the limescale marks. Rinse off the vinegar or lemon juice with clean water once you finish and dry the vessel.

6. Use baking soda for tough stains

A paste of baking soda and water will remove tough stains from ceramic vessel, rinse off the baking soda with clean water once finished.

7. Avoid harsh chemicals

Do not use aggressive cleaning products as these will damage or even, with repeated use, destroy the ceramic. Avoid cleaners that contain harsh chemicals and never mix cleaners.

8. Prevent mould build-up

One of the causes of a build-up of mould on your ceramic vessel is excess moisture in the air. This can be prevented by running an exhaust fan when you are using the bathroom. Also, drying your basin after each use or cleaning will keep the mould away.

WARRANTY

Thank you for purchasing this sink. These products have been made to demanding, high-quality standards and are 12 months guaranteed for domestic use against manufacturing faults. This warranty does not affect your statutory rights.

The sink is guaranteed if used for normal trade purposes and is valid for the original buyer only. Any warranty is deemed invalid if the sink has been improperly used or subject to neglect. The product is recommended for residential and non-commercial use. No warranty applies to commercial use. Tactical Distribution is not responsible for any costs related to labour, injuries or any other loss incurred during the product installation, repair or replacement, including any indirect or consequential damages. Due to continuous product improvement, we reserve the right to change the product specifications without prior notice.

INSTRUCTION MANUAL ROUND VESSEL



INSTALLATION PROCEDURE

STEP 1 - REPLACEMENT

Turn off water supply. Open faucet handles to relieve water pressure and ensure complete water shut-off. Remove existing faucet and vessel. Clean and dry surface thoroughly from where the new vessel will be installed.

STEP 2

Cut and place template at desired position on the countertop. Using a pencil, mark the location of the pop-up and faucet hole.

STEP 3

Cut the countertop opening by carefully following the pencil line traced from the template.

Note: Please use the appropriate saw that best fits your countertop material.

STEP 4

Check the alignment of the vessel to the opening in the countertop. Use a bead of clear silicone (or preferred adhesive) around the underside of the vessel. Carefully insert the vessel in place, align and press firmly.

Allow sealant to set for 30-60 minutes.

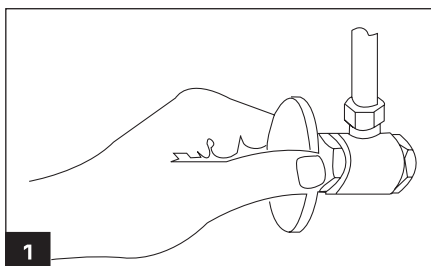
Note: Use acetone or rubbing alcohol to remove any excess sealant immediately after application.

Apply sealant between vessel and counter, according to the sealant manufacturer's recommendations. Do not over apply. Gently place the vessel onto the cabinet or counter. Allow to dry for twenty-four hours for proper setting.

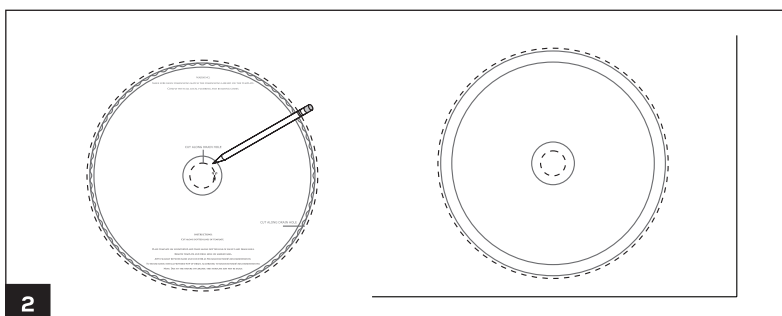
STEP 5

Connect drain to vessel. Connect trap to drain. Connect water supply connections to faucet according to the manufacturer's instructions.

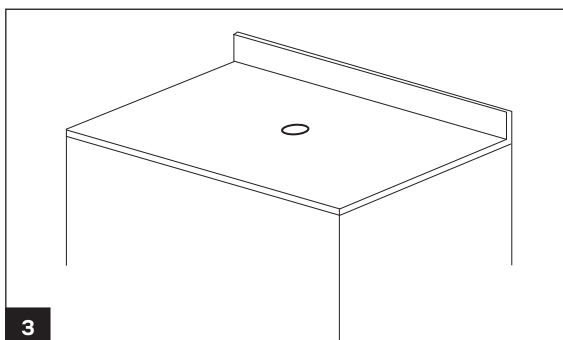
Run water into vessel and check for leaks.



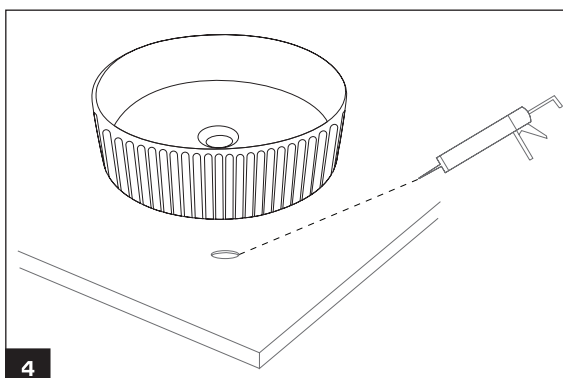
1



2



3



4

CARE AND MAINTENANCE

Use soft moist cloth for cleaning of the vessel. Do not use abrasives and hard cloth. Regular cleaning with the soap solution is recommended, do not use strong bleaching agents. In case acid liquids penetrate on the surface remove them immediately with soft cloth.